

L-7382 SBP/SRC

Fashion & Sports Safety Shoes (EH 18KV)

Light Weight Low Cut Safety Shoes is made with Sanvlar-Tech Fly Knitting Nylon Fabric and EVA/Rubber Outsole. It is designed as EN ISO 20345:2011 Quality with SBP category.



Upper : Sanvlar-Tech Fly Knitting Nylon Fabric

Lining : Breathable Sandwich Air Mesh

Insole : Comfortable EVA Coated Mesh

Outsole : EVA/Rubber Cement Outsole

Toecap : Composite Toecap

Penetration : Kevlar Midsole Plate

Size : EU 38-46#, UK 4-12#, US5-13#

CE EN ISO 20345:2011 SBP SRC

Application : Construction, Logistics, Mechanics, Glasses Installation, Workshop, Oil & Gas, Chemical Factory etc



200 JOULE
TOECAP



SLIP-
RESISTANT



SHOCK
ABSORPTION



ELECTRIC
HAZARD 18KV



ANTI-NAIL
MIDSOLE



PETROL AND
CHEMICAL
RESISTANT



OIL
RESISTANT



Composite Toe Cap Protection • AN1-EN12568

It is made with light weight fiber-glass material, which can reach 200 joules from falling or rolling objects. It is stronger and more light than steel toecap.



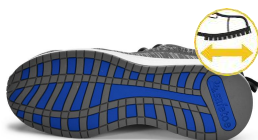
Kevlar Plate Protection • AN1-EN12568

Kevlar midsole plate, is zero-penetration resistant. It can resist 1100 newtons nail puncture from sharp objects. It is stronger and more flexible than steel plate.



Sanvlar-Tech Fly Knitting Upper • CE EN ISO 20345:2011

High quality fly knitting nylon fabric technology. It is treated with breathable technology to keep feet from dry during walking all days. Tear strength is required 10% higher than Europe test requirement, to reach longer lifespan.

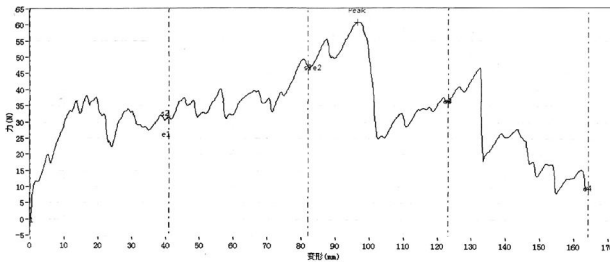


Heavy Duty EVA/Rubber Outsole • CE EN ISO 20345:2011

The outsole is made with EVA/Rubber material. The midsole is 40±5 degree hardness EVA, which is soft and shock absorption. The outsole is natural rubber with 5%-10% nitrile, which can pass 300 °C heat resistant HRO test.

Sole Bonding Strength Test

- EN ISO 20344:2011, 5.2 (Between Upper & Sole)
- Average Test Result 5.8 ± 5 (N/mm)



Upper, Lining & Bonding Strength Test Result

Upper Tear Strength \geq	60.0 Newtons
Upper Tensile Properties \geq	15.0 N/mm ²
Lining Tear Strength \geq	15.0 N/mm
Bonding Strength \geq	4.0 N/mm

✓ Protection With Slip Resistant (SRC)	Result
Test Requirement : SRA (Eurotile 2+Nal S) Forward Heel Slip ≥ 0.28 & Forward Flat Slip: ≥ 0.32 SRB (Steel Floor+Glycerine) Forward Heel Slip ≥ 0.13 & Forward Flat Slip: ≥ 0.18	PASS
Standards : EN ISO20344:2011(5.11) , SRC Means both SRA & SRB requirements are fulfilled.	
✓ Protection Against Electric Hazard (EH 18KV)	Result
Test Requirement : Test Voltage 18KV, Test Period 1 Minute, Leakage Current ≤ 1.0 mA	PASS
Standards : ASTM F2412-18a, Clause 9	
✓ Protection Resistant to Fuel Oil	Result
Test Requirement : Change in Volume and Change in Hardness (Outsole) is No More Than +12%(*)	PASS
Standards : EN ISO 20344:2011(8.6.1)	
SAFETOE Standard Package Instruction (Average 42# for Reference)	
Shoes Weight : 1.0-1.1 KGS /Pair	Carton Weight : 11-12 KGS /Carton
1 Pair / Color Box , Dimensions : 32×21×12CM	10 Pair / Carton , Dimensions : 62×43×33CM



User Instructions:

- 1.) RECOMMENDED TO USE : Construction, Logistics, Mechanics, Glasses Installation, Workshop, Farming, Garden, Oil & Gas, Chemical Factory etc.
- 2.) LIMITATION TO USE: It is very important that footwear selected must be suitable for the right workplaces. The protection against risks or hazards which are not mentioned in this document is not warranted.
- 3.) FITTING & SIZE: All footwear are marked with standard size on tongue label. Some are with different size comparison, such as EU size, UK size, US size etc. Please wear footwear in a suitable size.

- 4.) STORAGE: Keep the footwear in its original packaging, under ordinary temperature, non-humidity conditions and in clean, covered and ventilated premises.
- 5.) CLEANING: Clean footwear regularly by high quality cleaning treatments recommended as suitable for the purpose. Don't use caustic or corrosive cleaning agents.